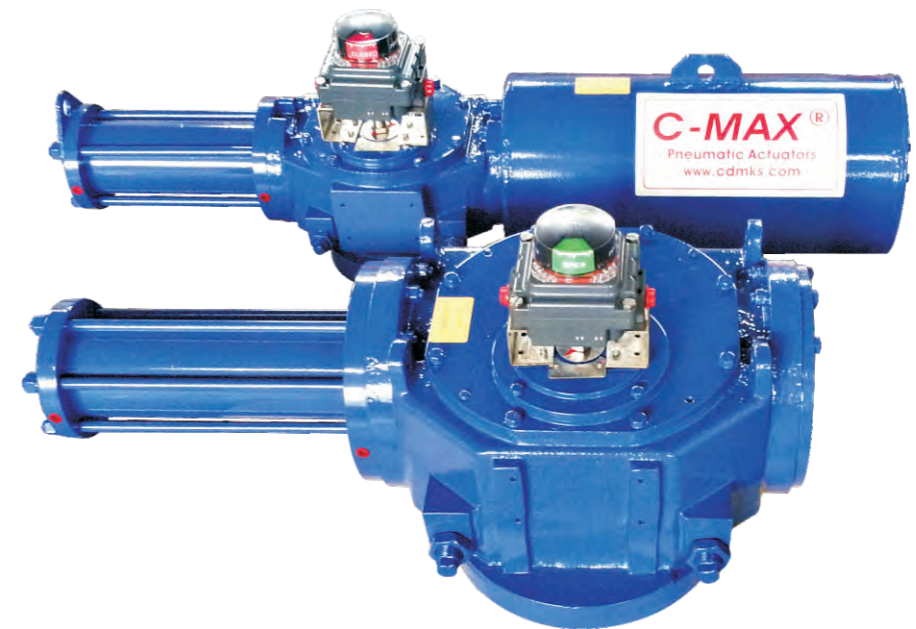


C-MAX[®]



HSF series Hydraulic Actuators HSF 系列阀门液压驱动装置

C-MAX[®]



成都麦克斯机械设备有限公司
CHENGDU MAX MACHINERY AND EQUIPMENT CO.,LTD

地址: 成都·大邑苏场工业开发区
Add: Suchang industry developing area Dayi county Chengdu
电话(Tel): 0086-028-88312338
传真(Fax): 0086-028-88311238
网址(Website): [Http://www.cmaxjx.com](http://www.cmaxjx.com)
邮编(Zip Code): 611330

成都麦克斯机械设备有限公司
CHENGDU MAX MACHINERY AND EQUIPMENT CO.,LTD

产品特性 | ADVANTAGES

▶ 防水保护 WATER INGRESS PROTECTED

箱体、箱盖等处装有O形圈，阻止外界的水分进入驱动装置内。
O-Rings are fitted on bodies, caps and so on, This ensure water ingress protected.

▶ ISO 标准连接尺寸 ISO VALVE MOUNTING

HSF系列液压驱动装置与阀门的连接尺寸在每一扭矩范围均符合ISO标准的要求。
The HSF series hydraulic actuators interface meets ISO standard, and meets the dimensional requirements of ISO defined for each torque range.

▶ 标准化的附件安装尺寸 STANDARDIZED

所有HSF系列驱动装置顶部输出附属连接均符合NUMAR标准，方便标准的电器附件安装操作。
The shaft driven accessory interface conforms to NUMAR and is identical on all HSF series models, allowing standardization of accessory mounting hardware and installation practices.

▶ 耐磨 WEAR RESISTANT

经过优良表面处理的活塞杆及导向杆与自润滑的轴承组合，保证优良的耐磨性，延长所有滑动零件的使用寿命。
The guide rod and piston rod have an advanced surface treatment which combined with self-lubricating bearings, provides superior wear resistance and extends the life of all sliding components.

▶ 传动效率高 HIGH EFFCIENCY

经过精磨的活塞杆、导向杆以及自润滑的轴承保证最大限度地输入的动力传递给阀门，大大提高传动效率，同时使得活塞杆的径向载荷最小。
The position rod and guide block connection, superior surface finishes and self-lubricating bearings maximize input Energy Transfer directly to the valve stem, Efficiency is further Enhanced by the tension-loaded Spring, minimizing radial loads On the piston rod.

▶ 防腐蚀 CORROSION RESISTANT

HSF系列液压驱动装置喷涂了3层以上的防护涂层，满足了石化等环境的要求，气缸内表面喷涂有聚四氟乙烯涂层增加防腐蚀和自润滑性。
The HSF series hydraulic actuators incorporate over three stages of internal and external coatings to resist severe weather, chemical and petroleum environments. The inner surface of cylinder is coated by PTFE, Enhanced corrosion resistant and self-lubricating.

▶ 模块设计 MODULAR DESIGN

HSF系列驱动装置由传动、气缸、弹簧和侧面附属装置几个模块构成，这些模块在安装时方便拆装、交换和稳固。为了减少库存，各模块可以分别采购。
The HSF series actuators have available, field-Serviceable drive, power, spring and override modules, The modules are removable, serviceable and inter changeable while mounted to the valve. Modules are available for separate purchase to reduce spare-parts inventory.

▶ 安全弹簧模块 SAFE SPRING MODULE

为保证在安装和维护弹簧模块时操作者的安全，弹簧模块只能整体沿气缸模块轴线从驱动装置移出，避免弹簧力对人生和驱动装置的伤害。
To ensure the safety of personnel during installation and maintenance the spring module has been designed so that it can only be removed from the power module with the spring in the fully extended position. This prevents accidental release of the spring force, protecting personnel from injury and the actuator from accidental damage.

技术参数及应用 | TECHNICAL PARAMETERS AND GENERAL APPLICATION

输出扭矩 TORQUE OUTPUTS

双动作 Double acting: 315~250000Nm
弹簧复位Spring return end torques: 118~71753Nm

操作压力 OPERATING PRESSURES

液动 Hydraulic: 0~200 Bar

温 度 OPERATING TEMPERATURES

标准 Standard: -20℃~80℃ 低温 Low Temperature: -40℃~80℃
高温 High Temperature: -20℃~120℃

HSF系列液压驱动装置作为球阀、蝶阀、旋塞阀、风阀等90° 回转阀门的自动驱动装置，广泛适用于化工、食品及饮料、冶金、海洋平台、制药、能源、石油天然气、造纸及纺织等行业。

The HSF series hydraulic actuators is normally used for remote control of any quarter-turn application: ball, butterfly, rotary plug or damper style valves, etc. To be used in chemical process, food and beverage, iron and steel, off-shore marine, pharmaceutical, power, oil and gas, pulp and paper, and textile industries.

结构特点 | DESIGN FEATURES OFFER UNIQUE BENEFITS

① 弹簧安全 SAFE SPRING LOCK

压缩后牢固封闭的弹簧模块，阻止弹簧模块从箱体处脱离。
Positively locks the spring module in place under load. Prevents spring module detachment from the drive module.

② 减少磨损 REDUCED WEAR

活塞杆在导向杆的支撑下，抵消了活塞的侧向载货，减少活塞杆、轴承和密封件的磨损。
Connects the piston rod with the guide block, compensating for side load deflection and reducing wear on rod, bearings and seals.

③ 标准安装 STANDARDIZED MOUNTING

采用NUMAR标准安装结构，适用多种标准化的附件安装。
The NUMAR mounting configuration Allows standardization of mounting Hardware for a wide range of shaft driven accessories.

④ 可更换的轴承 REPLACEABLE BEARINGS

可更换的轴承不论在干燥的还是润滑条件下对滑动和旋转部件进行保护。
Replaceable Bearings Protect sliding and rotating Components, with suitability for either dry or lubricated working conditions.

⑤ 聚四氟乙烯导向条 PTFE GUIDE BAR

聚四氟乙烯条阻止销轴的轴向移动将轴向载荷传递给驱动模块。
PTFE thrust bar prevents yoke pin axial movement, transferring axial loads directly to the drive module case.

⑥ 弹簧模块用液压手动装置 MANUAL HYDRAULIC DEVICE FOR SPRING MODULE

内藏式弹簧复位驱动装置不需要增加驱动装置的长度。
Inside hydraulic override cylinder module for spring-return models doesn't increase actuator length.

⑦ 起吊方便 EASY LIFTING

SF25及以上规格的驱动装置箱体上设置有4个吊装孔确保在运输、安装、移动中的安全。
SF25 and larger models equipped with four lifting eyes for safe actuator handling during shipping installation and removal.

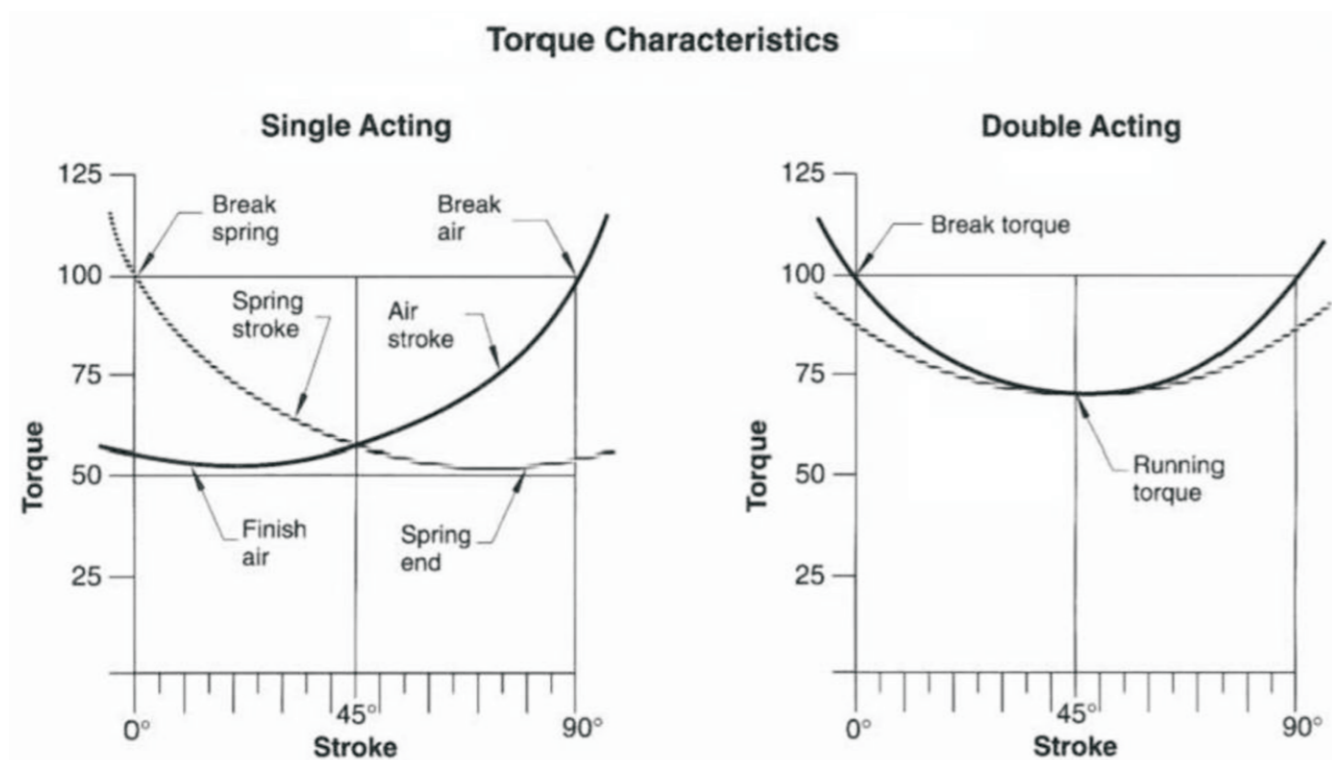
⑧ 行程80° - 100° 可调 80° TO 100° TRAVEL ADJUSTMENT

双向行程限位装置，满足驱动装置在80° ~ 100° 范围内可调。
Bi-Directional Travel Stops integral to the actuator, the stops allow 80° to 100° total travel adjustment.

⑨ 滚套 ROLLER

拨叉和销轴之间通过滚套连接，减少销轴和拨叉间的摩擦以及拨叉和销轴的磨损。
Rollers be used, Reduce the friction between the yoke arm and pin, minimizing the wear of yoke arm and pin.

扭矩特性 | TORQUE CHARACTERISTICS



扭矩测试 | TORQUE TEST

我公司购买了3套独特的数显式扭矩测试台,能够精确地对驱动装置的输出扭矩进行测试,可以提供整个运行过程中的实测输出扭矩表。

We have purchased three set unique digital torque-testers which enables us to accurately measure an actuator's torque output, thus the actuators can be supplied with a torque sheet, which details actual torque output throughout the actuator's travel range.

扭矩测试范围为: 100Nm~250000Nm

Torque test range: 100Nm~250000Nm

扭矩表 | TORQUE SHEET

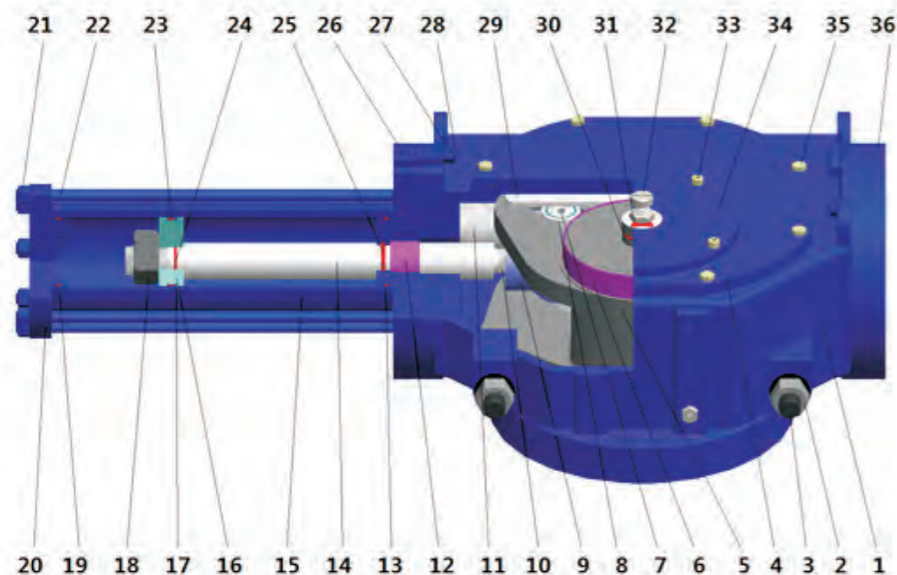
► 双动作型 Double Acting

● 双动作液动头扭矩表 (Nm)

型号	液压产生扭矩					
	70BAR		100BAR		135BAR	
	起始扭矩	运行扭矩	起始扭矩	运行扭矩	起始扭矩	运行扭矩
HSF10-40DA	315	189	450	270	607	364
HSF12-40DA	393	236	562	337	758	455
HSF12-50DA	756	454	1081	649		
HSF14-60DA	1364	818	1949	1169	2631	1578
HSF14-70DA	1994	1196	2849	1709		
HSF16-70DA	2347	1408	3354	2012	4527	2716
HSF16-80DA	3256	1953	4652	2791		
HSF25-90DA	4838	2902	6912	4147	9331	5598
HSF25-100DA	6219	3871	8885	5331		
HSF25-110DA	7746	4648				
HSF30-110DA	8951	5371	12788	7673	17263	10358
HSF30-120DA	10995	6596	15708	9424	21205	12722
HSF30-130DA	13216	7929	18881	11328		
HSF35-130DA	15690	9414	22415	13449	30260	18156
HSF35-150DA	22023	13213	31462	18877		
HSF35-170DA	29261	17556				
HSF40-170DA	32956	19773	47081	28248	63559	38135
HSF40-190DA	42843	25706	61205	36723		
HSF40-220DA	59734	35840				
HSF48-190DA	49233	29539	70333	42199	94949	56969
HSF48-220DA	69104	41462	98720	59232	133272	79963
HSF48-245DA	87884	52730	125549	75329		
HSF48-270DA	108684	65210				
HSF60-245DA	113246	67947	161780	97068	218403	131041
HSF60-270DA	141326	84795	201895	121136	272558	163533
HSF60-320DA	205664	1223398	293807	176284		

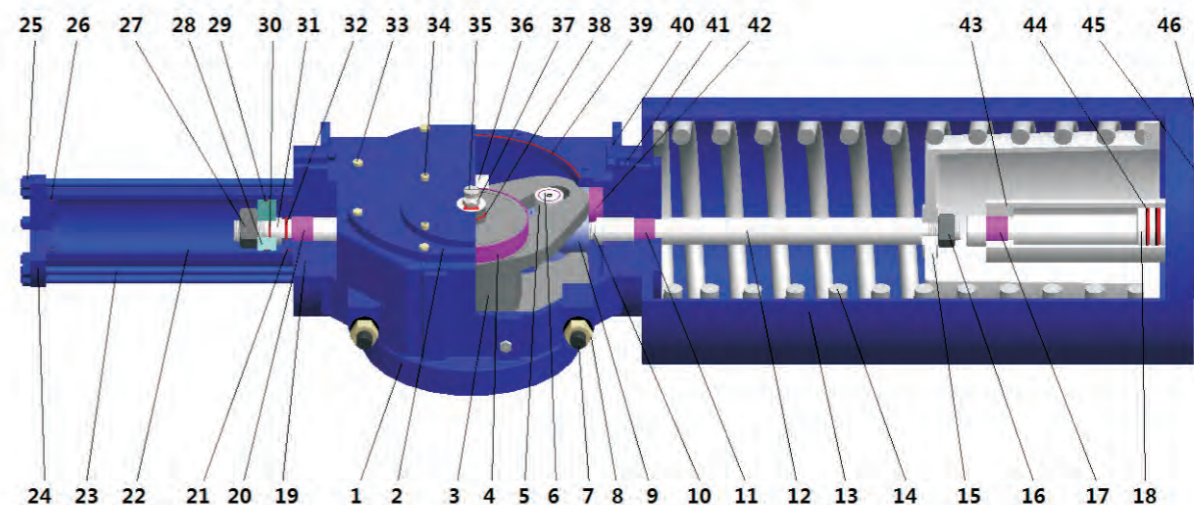
组装图 | ASSEMBLY DRAWING

▶ 双动作型 Double Acting



序号 No.	零件名称 Name	材质 Material	序号 No.	零件名称 Name	材质 Material
1	箱体 Body	球墨铸铁 Ductile Iron	19	O型圈 O-Ring	NBR
2	螺母 Nut	2H	20	端盖 End Cap	碳钢 Carbon Steel
3	调节螺柱 Adjust Stud	B7	21	螺母 Nut	2H
4	箱盖 Body Cap	球墨铸铁 Ductile Iron	22	螺柱 Screw	B7
5	拨叉 Yoke	球墨铸铁 Ductile Iron	23	O型圈 O-Ring	NBR
6	滑动轴承 Sliding Bearing	金属衬 TFE Metal+TFE	24	O型圈 O-Ring	NBR
7	销轴 Pin	合金钢 Alloy Steel	25	O型圈 O-Ring	NBR
8	滚套 Roller	合金钢 Alloy Steel	26	隔板 Adapter	碳钢 Carbon Steel
9	导向块 Guide Block	球墨铸铁 Ductile Iron	27	螺母 Nut	2H
10	螺母 Nut	2H	28	双头螺柱 Stud	B7
11	导向杆 Guide Bar	合金钢 Alloy Steel	29	导向条 Guide plate	PTFE
12	滑动轴承 Sliding Bearing	金属衬 TFE Metal+TFE	30	O型圈 O-Ring	NBR
13	O型圈 O-Ring	NBR	31	螺母 Nut	304
14	活塞杆 Center Bar	合金钢 Alloy Steel	32	反馈轴 Drive Shaft	304
15	液压缸 Cylinder	碳钢 Carbon Steel	33	螺栓 Bolt	碳钢 Carbon Steel
16	液压活塞 Hydraulic Piston	碳钢 Carbon Steel	34	顶盖 Cover	碳钢 Carbon Steel
17	挡圈 Shield ring	PTFE	35	双头螺柱 Stud	B7
18	螺母 Nut	2H	36	封盖 Cover Plate	球墨铸铁 Ductile Iron

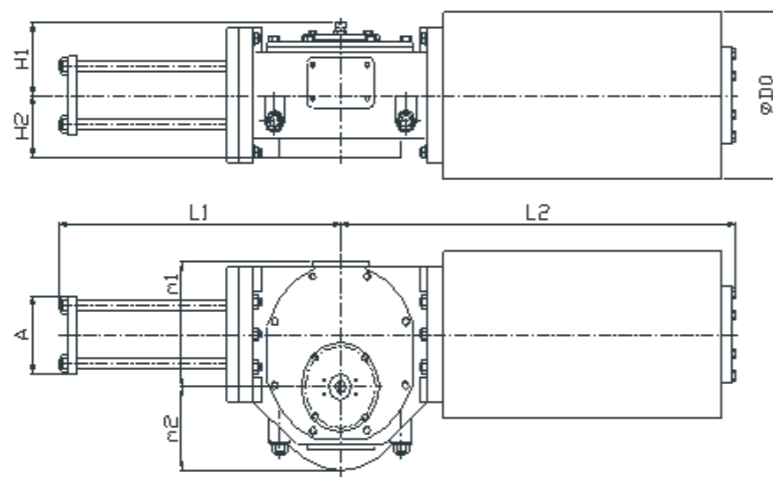
▶ 弹簧复位型 Spring Reutrnr Acting



序号 No.	零件名称 Name	材质 Material	序号 No.	零件名称 Name	材质 Material
1	箱体 Body	球墨铸铁 Ductile Iron	24	端盖 End Cap	碳钢 Carbon Steel
2	箱盖 Body Cap	球墨铸铁 Ductile Iron	25	螺母 Nut	2H
3	拨叉 Yoke	碳钢 Carbon Steel	26	O型圈 O-Ring	NBR
4	滑动轴承 Sliding Bearing	金属衬 TFE Metal+TFE	27	螺母 Nut	2H
5	滚套 Roller	合金钢 Alloy Steel	28	液压活塞 Hydraulic Piston	碳钢 Carbon Steel
6	销轴 Pin	合金钢 Alloy Steel	29	挡圈 Shield ring	PTFE
7	调节螺柱 Adjust Stud	B7	30	O型圈 O-Ring	NBR
8	螺母 Nut	2H	31	O型圈 O-Ring	NBR
9	导向块 Guide Block	球墨铸铁 Ductile Iron	32	活塞杆 Center Bar	合金钢 Alloy Steel
10	螺母 Nut	2H	33	螺栓 Bolt	碳钢 Carbon Steel
11	滑动轴承 Sliding Bearing	金属衬 TFE Metal+TFE	34	螺栓 Bolt	碳钢 Carbon Steel
12	拉杆 Tension rod	合金钢 Alloy Steel	35	反馈轴 Drive Shaft	304
13	弹簧缸 Spring Case	碳钢 Carbon Steel	36	导向条 Guide plate	PTFE
14	弹簧 Spring	合金钢 Alloy Steel	37	螺母 Nut	304
15	弹簧座 Spring Seat	碳钢 Carbon Steel	38	O型圈 O-Ring	NBR
16	螺母 Nut	2H	39	O型圈 O-Ring	NBR
17	滑动轴承 Sliding Bearing	金属衬 TFE Metal+TFE	40	螺母 Nut	2H
18	液压活塞 Hydraulic Piston	碳钢 Carbon Steel	41	双头螺柱 Stud	B7
19	隔板 Adapter	碳钢 Carbon Steel	42	滑动轴承 Sliding Bearing	金属衬 TFE Metal+TFE
20	滑动轴承 Sliding Bearing	金属衬 TFE Metal+TFE	43	液压缸 Hydraulic Cylinder	碳钢 Carbon Steel
21	O型圈 O-Ring	NBR	44	O型圈 O-Ring	NBR
22	液压缸 Cylinder	碳钢 Carbon Steel	45	封盖 Cover Plate	碳钢 Carbon Steel
23	螺柱 Screw	B7	46	螺栓 Bolt	碳钢 Carbon Steel

尺寸表 | DIMENSION

► 弹簧复位型 Spring Reutrnr Acting

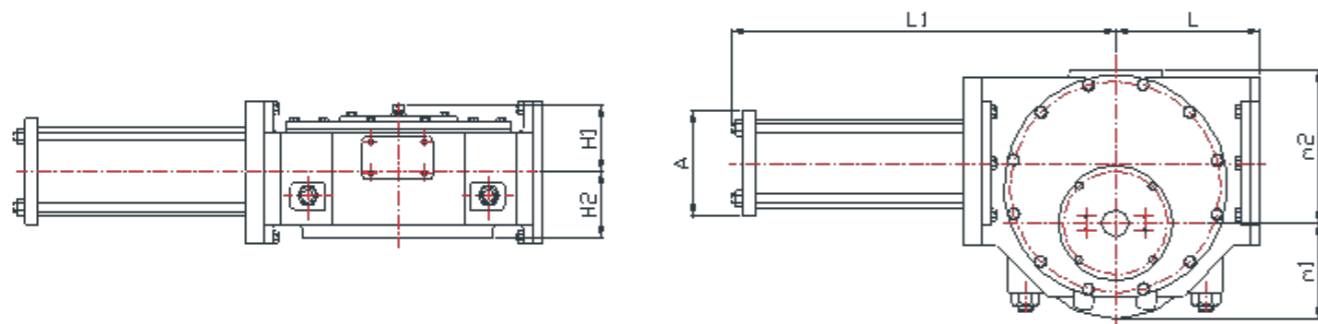


型号	连接法兰	L1	L2	m1	m2	H1	H2	A	D0	进油口尺寸
HSF10-40S-S1	ISO 5211/F10	345	465	82	123	102	82	85	168	RC1/4
HSF10-40S-S2		345	465	82	123	102	82	85	168	RC1/4
HSF10-50S-S2		345	465	82	123	102	82	90	168	RC1/4
HSF10-50S-S3		345	465	82	123	102	82	90	219	RC1/4
HSF10-60S-S3		345	465	82	123	102	82	100	219	RC1/4
HSF12-50S-S1	ISO 5211/F12	398	515	105	180	119	98	90	219	RC1/4
HSF12-60S-S1		398	515	105	180	119	98	100	219	RC1/4
HSF12-50S-S2		398	515	105	180	119	98	90	219	RC1/4
HSF12-60S-S2		398	515	105	180	119	98	100	219	RC1/4
HSF12-70S-S2		398	515	105	180	119	98	110	219	RC1/4
HSF14-60S-S1	ISO 5211/F14	455	619	89	155	114	87	100	273	RC1/4
HSF14-70S-S1		455	619	89	155	114	87	110	273	RC1/4
HSF14-60S-S2		455	619	89	155	114	87	100	325	RC1/4
HSF14-70S-S2		455	619	89	155	114	87	110	325	RC1/4
HSF14-70S-S3		455	619	89	155	114	87	110	325	RC1/4
HSF14-80S-S3	455	619	89	155	114	87	125	325	RC1/4	
HSF14-100S-S3	455	619	89	155	114	87	145	325	RC3/8	
HSF16-70S-S1	ISO 5211/F16	530	775	105	180	119	98	110	325	RC1/4
HSF16-80S-S1		530	775	105	180	119	98	125	325	RC1/4
HSF16-90S-S1		530	775	105	180	119	98	135	325	RC3/8
HSF16-80S-S2		530	775	105	180	119	98	125	325	RC1/4
HSF16-90S-S2		530	775	105	180	119	98	135	325	RC3/8
HSF16-100S-S2		530	775	105	180	119	98	145	325	RC3/8
HSF16-80S-S3		530	775	105	180	119	98	125	325	RC1/4
HSF16-100S-S3		530	775	105	180	119	98	145	325	RC3/8
HSF16-110S-S3		530	775	105	180	119	98	150	325	RC3/8

型号	连接法兰	L1	L2	m1	m2	H1	H2	A	D0	进油口尺寸	
HSF25-90S-S1	ISO 5211/F25	610	940	150	222	138	122	135	325	RC3/8	
HSF25-100S-S1		610	940	150	222	138	122	145	325	RC3/8	
HSF25-110S-S1		610	940	150	222	138	122	150	325	RC3/8	
HSF25-100S-S2		610	940	150	222	138	122	145	377	RC3/8	
HSF25-110S-S2		610	940	150	222	138	122	150	377	RC3/8	
HSF25-120S-S2		610	940	150	222	138	122	170	377	RC3/8	
HSF25-100S-S3		610	940	150	222	138	122	145	426	RC3/8	
HSF25-120S-S3		610	940	150	222	138	122	170	426	RC3/8	
HSF25-140S-S3		610	940	150	222	138	122	190	426	RC3/8	
HSF30-110-S1		ISO 5211/F30	730	1165	175	262	163	139	150	426	RC3/8
HSF30-120-S1	730		1165	175	262	163	139	170	426	RC3/8	
HSF30-140S-S1	730		1165	175	262	163	139	190	508	RC3/8	
HSF30-120S-S2	730		1165	175	262	163	139	170	508	RC3/8	
HSF30-130S-S2	730		1165	175	262	163	139	186	508	RC3/8	
HSF30-150S-S2	730		1165	175	262	163	139	200	508	RC3/8	
HSF30-130S-S3	730		1165	175	262	163	139	186	508	RC3/8	
HSF30-150S-S3	730		1165	175	262	163	139	200	508	RC3/8	
HSF30-170S-S3	730		1165	175	262	163	139	210	508	RC1/2	
HSF35-130S-S1	ISO 5211/F35		855	1511	207.5	320	180	177	186	508	RC3/8
HSF35-150S-S1		855	1511	207.5	320	180	177	200	508	RC3/8	
HSF35-170S-S1		855	1511	207.5	320	180	177	210	508	RC1/2	
HSF35-150S-S2		855	1511	207.5	320	180	177	200	630	RC3/8	
HSF35-170S-S2		855	1511	207.5	320	180	177	210	630	RC1/2	
HSF35-190S-S2		855	1511	207.5	320	180	177	285	630	RC1/2	
HSF35-170S-S3		855	1511	207.5	320	180	177	210	630	RC1/2	
HSF35-190S-S3		855	1511	207.5	320	180	177	285	630	RC1/2	
HSF35-220S-S3		855	1511	207.5	320	180	177	310	630	RC1/2	
HSF40-170S-S1		ISO 5211/F40	990	1760	237.5	377	202	190	210	630	RC1/2
HSF40-190S-S1	990		1760	237.5	377	202	190	285	630	RC1/2	
HSF40-220S-S1	990		1760	237.5	377	202	190	310	630	RC1/2	
HSF40-190S-S2	990		1760	237.5	377	202	190	285	730	RC1/2	
HSF40-220S-S2	990		1760	237.5	377	202	190	310	730	RC1/2	
HSF40-245S-S2	990		1760	237.5	377	202	190	350	730	RC1/2	
HSF48-190S-S1	ISO 5211/F48		1150	2305	280	450	238	227	285	730	RC1/2
HSF48-220S-S1			1150	2305	280	450	238	227	310	730	RC1/2
HSF48-245S-S1			1150	2305	280	450	238	227	350	730	RC1/2
HSF48-220S-S2			1150	2305	280	450	238	227	310	730	RC1/2
HSF48-245S-S2		1150	2305	280	450	238	227	350	730	RC1/2	
HSF48-270S-S2		1150	2305	280	450	238	227	385	730	RC1/2	
HSF48-245S-S3		1150	2305	280	450	238	227	350	730	RC1/2	
HSF48-270S-S3		1150	2305	280	450	238	227	385	730	RC1/2	
HSF48-290S-S3		1150	2305	280	450	238	227	405	730	RC1/2	
HSF60-220S-S1		ISO 5211/F60	1420	3100	343	545	240	230	310	730	RC1/2
HSF60-245S-S1	1420		3100	343	545	240	230	350	730	RC1/2	
HSF60-270S-S1	1420		3100	343	545	240	230	385	730	RC1/2	
HSF60-245S-S2	1420		3100	343	545	240	230	350	730	RC1/2	
HSF60-270S-S2	1420		3100	343	545	240	230	385	730	RC1/2	
HSF60-320S-S2	1420		3100	343	545	240	230	440	730	RC1/2	

尺寸表 | DIMENSION

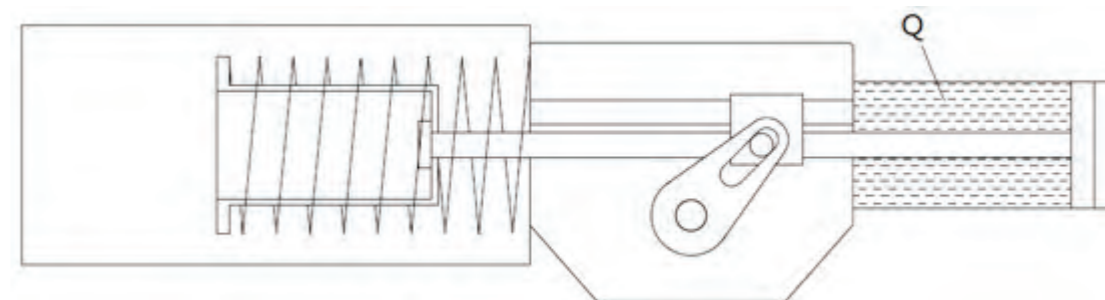
▶ 双动作型 Double Acting



型号 Model	连接法兰 Flange	L1	L2	m1	m2	H1	H2	A	进油口尺寸
HSF10-40DA	ISO 5211/F10	345	124	82	123	102	82	85	RC1/4
HSF12-40DA	ISO 5211/F12	398	140	87	143	105	85	85	RC1/4
HSF12-50DA	ISO 5211/F12	398	140	87	143	105	85	90	RC1/4
HSF14-60DA	ISO 5211/F14	455	170	89	155	114	87	100	RC1/4
HSF14-70DA	ISO 5211 F14	455	170	89	155	114	87	110	RC1/4
HSF16-70DA	ISO 5211/F16	530	194	105	180	119	98	110	RC1/4
HSF16-80DA	ISO 5211/F25	530	194	105	180	119	98	125	RC1/4
HSF25-90DA	ISO 5211/F25	610	226	150	222	138	122	135	RC3/8
HSF25-100DA	ISO 5211/F25	610	226	150	222	138	122	145	RC3/8
HSF25-110DA	ISO 5211/F25	610	226	150	222	138	122	150	RC3/8
HSF30-110DA	ISO 5211/F30	730	275	175	262	163	139	150	RC3/8
HSF30-120DA	ISO 5211/F30	730	275	175	262	163	139	170	RC3/8
HSF30-130DA	ISO 5211/F30	730	275	175	262	163	139	186	RC3/8
HSF35-130DA	ISO 5211/F35	855	332	207.5	320	180	177	186	RC3/8
HSF35-150DA	ISO 5211/F35	855	332	207.5	320	180	177	200	RC3/8
HSF35-170DA	ISO 5211/F35	855	332	207.5	320	180	177	210	RC1/2
HSF40-170DA	ISO 5211/F40	990	402	237.5	377	202	190	210	RC1/2
HSF40-190DA	ISO 5211/F40	990	402	237.5	377	202	190	285	RC1/2
HSF40-220DA	ISO 5211/F40	990	402	237.5	377	202	190	310	RC1/2
HSF48-190DA	ISO 5211/F48	1150	475	280	450	238	227	285	RC1/2
HSF48-220DA	ISO 5211/F48	1150	475	280	450	238	227	310	RC1/2
HSF48-245DA	ISO 5211/F48	1150	475	280	450	238	227	350	RC1/2
HSF48-270DA	ISO 5211/F48	1150	475	280	450	238	227	385	RC1/2
HSF60-245DA	ISO 5211/F60	1420	468	343	545	240	230	350	RC1/2
HSF60-270DA	ISO 5211/F60	1420	468	343	545	240	230	395	RC1/2
HSF60-320DA	ISO 5211/F60	1420	468	343	545	240	230	440	RC1/2

液压缸容积 | HYDRAULIC CYLINDER VOLUME

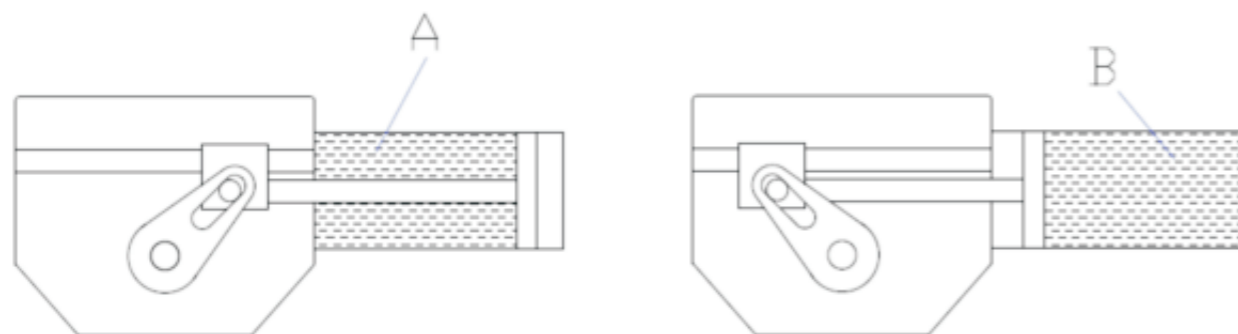
▶ 弹簧复位液动头液压缸容积 Spring Reset Hydraulic Head Of Hydraulic Cylinder



型号	液压缸容积 A (ml)	型号	液压缸容积 A (ml)	型号	液压缸容积 A (ml)
HSF10-40S-S1	110	HSF16-110S-S3	1480	HSF35-170S-S3	6500
HSF10-40S-S2	110	HSF25-90S-S1	1100	HSF35-190S-S3	8350
HSF10-50S-S2	150	HSF25-100S-S1	1420	HSF35-220S-S3	11500
HSF10-50S-S3	150	HSF25-110S-S1	1770	HSF40-170S-S1	7180
HSF10-60S-S3	235	HSF25-100S-S2	1420	HSF40-190S-S1	9400
HSF12-50S-S1	180	HSF25-110S-S2	1770	HSF40-220S-S1	13100
HSF12-60S-S1	285	HSF25-120S-S2	2150	HSF40-190S-S2	9400
HSF12-50S-S2	285	HSF25-100S-S3	1420	HSF40-220S-S2	13100
HSF12-60S-S2	285	HSF25-120S-S3	2150	HSF40-245S-S2	16500
HSF12-70S-S2	405	HSF25-140S-S3	3000	HSF48-190S-S1	10800
HSF14-60S-S1	310	HSF30-110-S1	1980	HSF48-220S-S1	15200
HSF14-70S-S1	455	HSF30-120-S1	2450	HSF48-245S-S1	19300
HSF14-60S-S2	310	HSF30-140S-S1	3460	HSF48-220S-S2	15200
HSF14-70S-S2	455	HSF30-120S-S2	2450	HSF48-245S-S2	19300
HSF14-70S-S3	455	HSF30-130S-S2	2950	HSF48-270S-S2	23800
HSF14-80S-S3	620	HSF30-150S-S2	4050	HSF48-245S-S3	19300
HSF14-100S-S3	1010	HSF30-130S-S3	2950	HSF48-270S-S3	23800
HSF16-70S-S1	520	HSF30-150S-S3	4050	HSF48-290S-S3	27900
HSF16-80S-S1	720	HSF30-170S-S3	5300	HSF60-220S-S1	19000
HSF16-90S-S1	950	HSF35-130S-S1	3490	HSF60-245S-S1	24500
HSF16-80S-S2	720	HSF35-150S-S1	4920	HSF60-270S-S1	30600
HSF16-90S-S2	950	HSF35-170S-S1	6500	HSF60-245S-S2	24500
HSF16-100S-S2	1200	HSF35-150S-S2	4920	HSF60-270S-S2	30600
HSF16-80S-S3	720	HSF35-170S-S2	6500	HSF60-320S-S2	44500
HSF16-100S-S3	1200	HSF35-190S-S2	8350		

液压缸容积 | HYDRAULIC CYLINDER VOLUME

▶ 双动作液动头液压缸容积 Double Action Hydraulic Head Of Hydraulic Cylinder



型号	液压缸容积 A侧 (ml)	液压缸容积 B侧 (ml)	型号	液压缸容积 A (ml)	液压缸容积 B侧 (ml)
HSF10-40DA	110	165	HSF35-130DA	3490	4330
HSF12-40DA	120	198	HSF35-150DA	4920	5740
HSF12-50DA	150	245	HSF35-170DA	6500	7380
HSF14-60DA	310	425	HSF40-170DA	7180	8750
HSF14-70DA	455	580	HSF40-190DA	9400	10920
HSF16-70DA	520	700	HSF40-220DA	13100	14650
HSF16-80DA	720	910	HSF48-190DA	10800	12750
HSF25-90DA	1100	1340	HSF48-220DA	15200	17100
HSF25-100DA	1420	1650	HSF48-245DA	19300	21230
HSF25-110DA	1770	2000	HSF48-270DA	23800	25800
HSF30-110DA	1980	2450	HSF60-245DA	24500	28270
HSF30-120DA	2450	2900	HSF60-270DA	30600	34400
HSF30-130DA	2950	3400	HSF60-320DA	44500	48300

型号构成 | MODEL

